



Configuration Management System

The foundation for ITOM and Hybrid IT

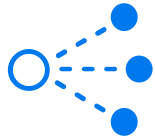
Idan Yurfest
Presales Consultant
Central East Europe & Israel
Idan.Yurfest@microfocus.com

Hybrid

is more than a buzzword.



Today's Reality



Multiple
deployment
models



Multiple
consumption
and financing
options



Lower
IT run
budgets



Pressures
to innovate



IoT
proliferation

Effective *management* of hybrid environments will be key

Challenges

Capabilities

Business Result

Lack of visibility to the datacenter

Real-time asset & Dependency



Constantly up-to-date, real-time dynamic view of configuration management across your environments

Unknown SW/HW asset usage & compliance

Comprehensive inventory discovery



Optimized IT asset and software license usage, and stay compliant

Time consuming mapping of dependencies

Automated & template based service modeling



Effective service modeling to improve service management quality for change, incident, monitoring and compliance

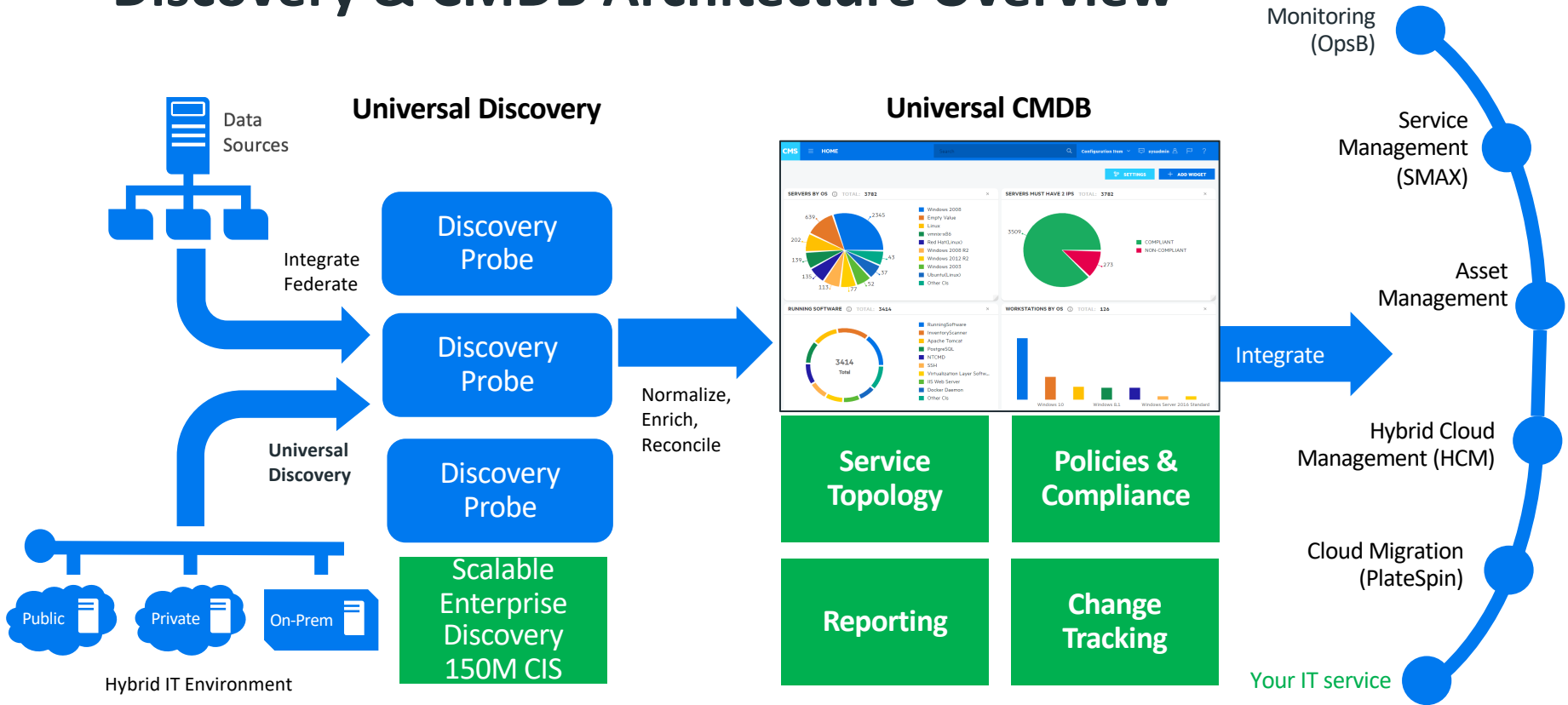
Unplanned / emergency change requests

Integrate with services like service desk and monitoring



Planned change management and impact analysis for faster resolution

Discovery & CMDB Architecture Overview



Universal Discovery Out-of-the-box Capabilities

Applications



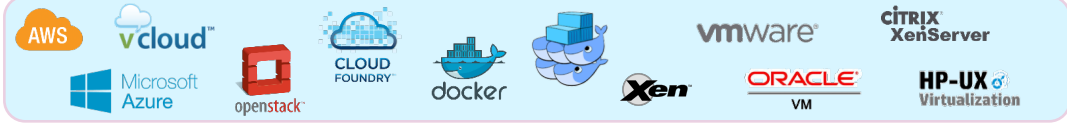
Databases



Clusters & Load Balancers



Virtualization & Cloud



Inventory & Infrastructure Discovery



Storage Discovery



Network Discovery



Hybrid Cloud Discovery – Main Use Cases



Cloud Transformation

Ensure consistency of workload transformation (before & after migration)



Inventory & Visibility

Inventory of systems and end-to-end visibility for services in hybrid & multiple accounts



Software Asset Management

Manage costs and compliance for software deployed in the cloud



Compliance & Change Detection

Alignment to company & industry standards and policies

Benefits of Micro Focus CMS on Change Management

Understand Change Impact



Understand the impact an on your business services

Avoid Service Disruptions



Learn what might be the reason for a service disruption

Authorize Changes Wisely



Plan your changes based on accurate maps

Transparency and Closed Loop



Share data among your processes

Main CMS Themes



New User Experience



**Hybrid Cloud
Management**



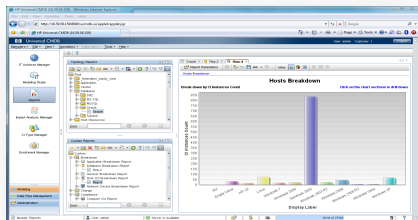
**Smart Discovery &
Integrations**



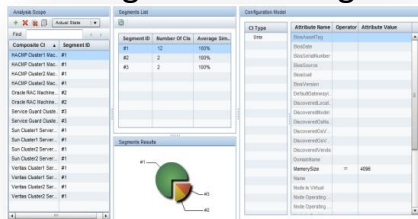
Flexible Licensing

User Experience Transformation: UI & API

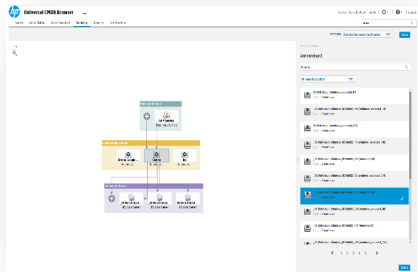
CMS Admin UI



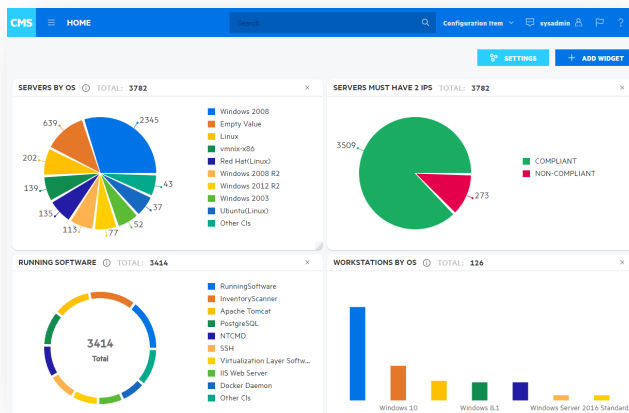
Configuration Manager



UCMDB Browser



CMS UI leverages REST API & React JS

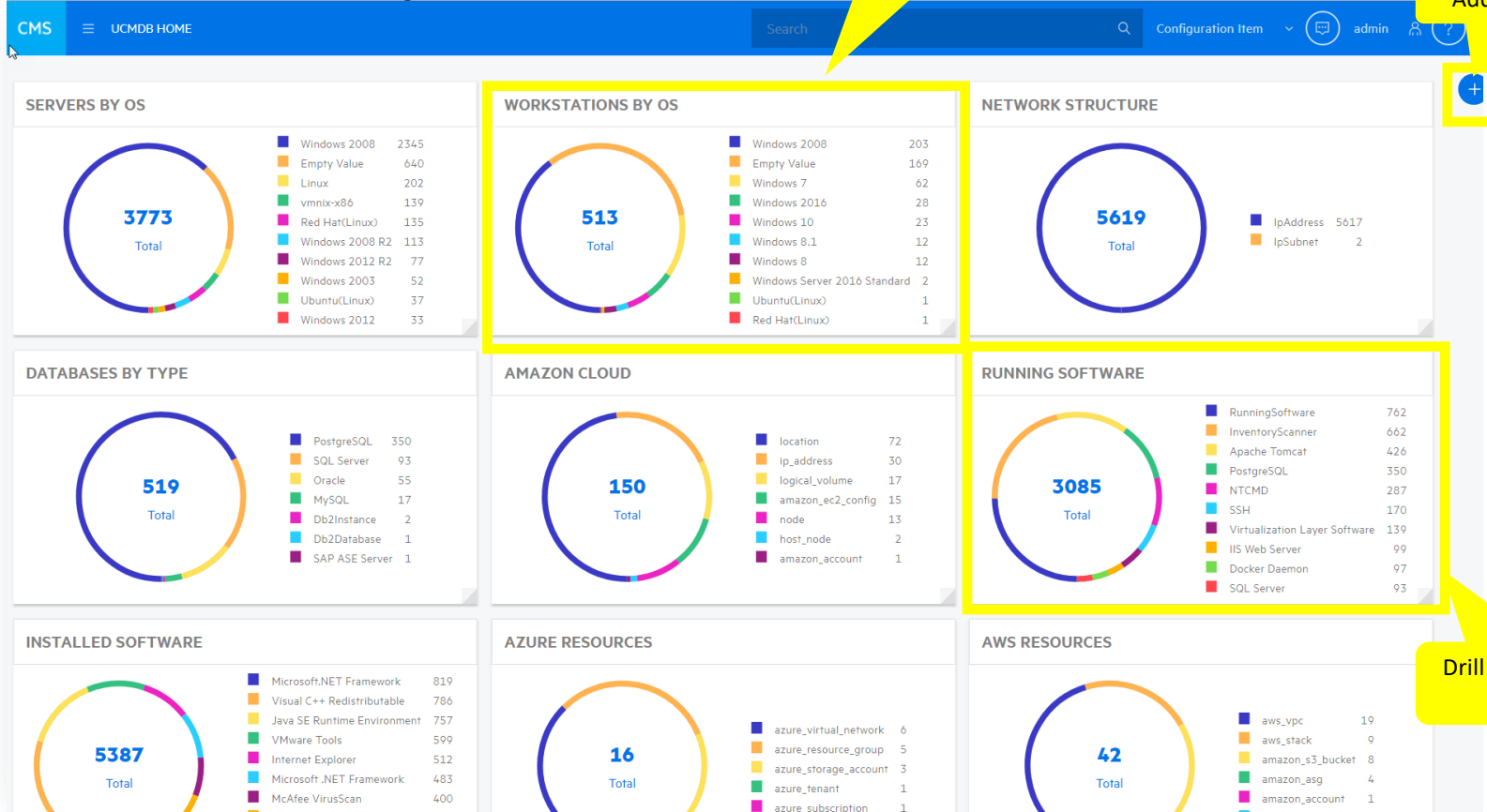


- ✓ Redesigned Home Page
- ✓ Build queries & views
- ✓ Consume views & models
- ✓ Policies & compliance
- ✓ Search for resources
- ✓ Analyse Data-in
- ✓ Integrate with products
- ✓ Manage packages
- ✓ Manage Idap mapping
- ✓ Probe management and reporting

Modern User Experience

Out-Of-The-Box
Dashboards

Add your own reports



Drill down for complete
report

The Micro Focus Discovery & CMDB Advantage

The highest quality, real-time data supporting IT Operations



Breadth and depth of discovery: agent, agent-less or hybrid discovery in one tool



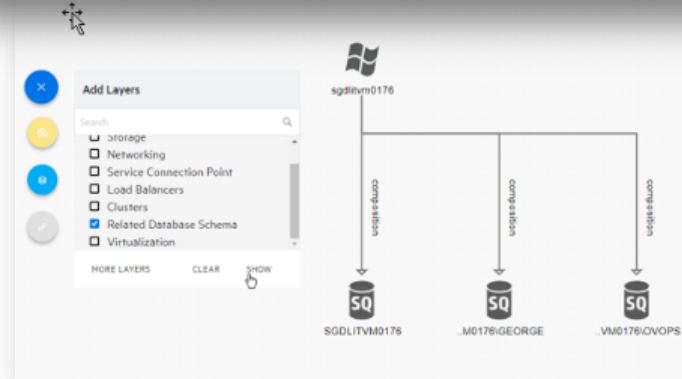
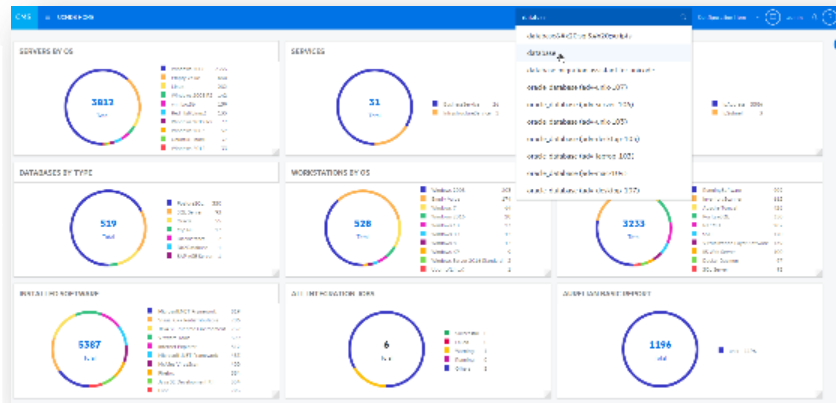
Multi-cloud discovery of private & public cloud



Modern, intuitive UI & Open Platform



Smart Software Analytics for proactive software license additions

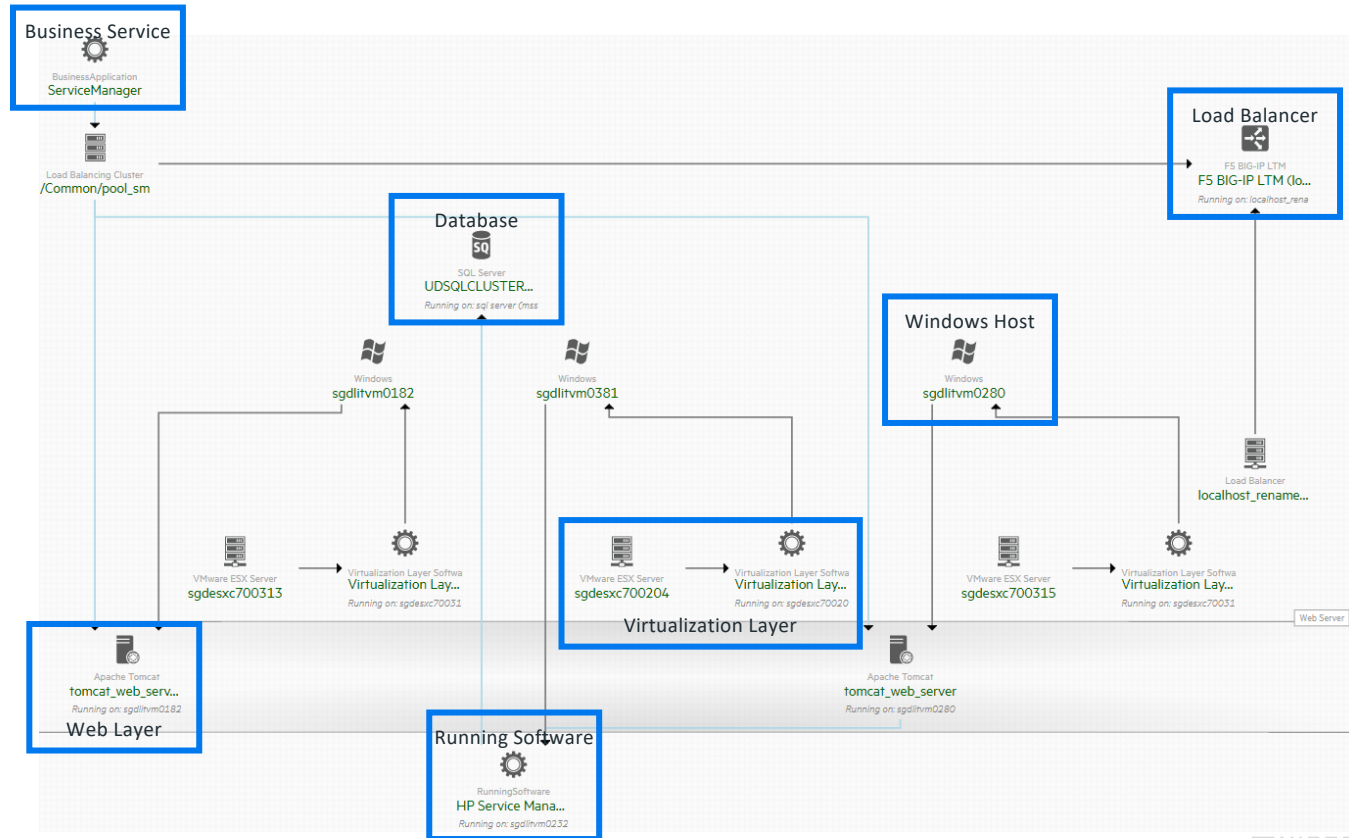


Discovery for Hybrid Cloud



Automated Service Modeling

- Only enter a 'URL' or 'ip' to start
- ASM Models will automatically stay accurate over time
- Allows the service owner to create their model, rather than the UCMDB Admin
- ASM now supports URL and 'non URL' entry points
- Easier troubleshooting in version 11



Full Policy Management and Compliance

Define policies for any Configuration Item **and its related CIs** and apply to any group of CIs in your organization

Ensure **Compliance** to your policies for On-Premise and Cloud resources

Show results in the CMS UI Homepage with a new Compliancey Widget

Out-of-the-box Sample rules

Clusters have at least 2 servers

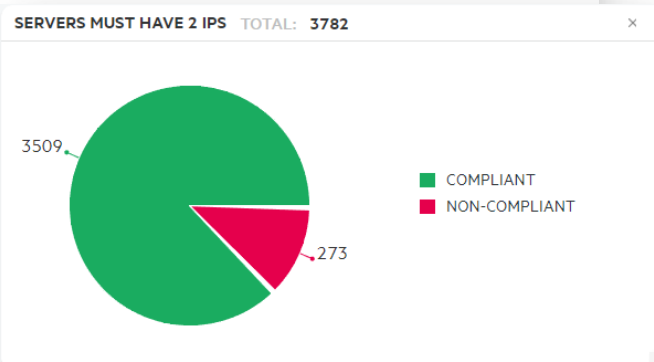
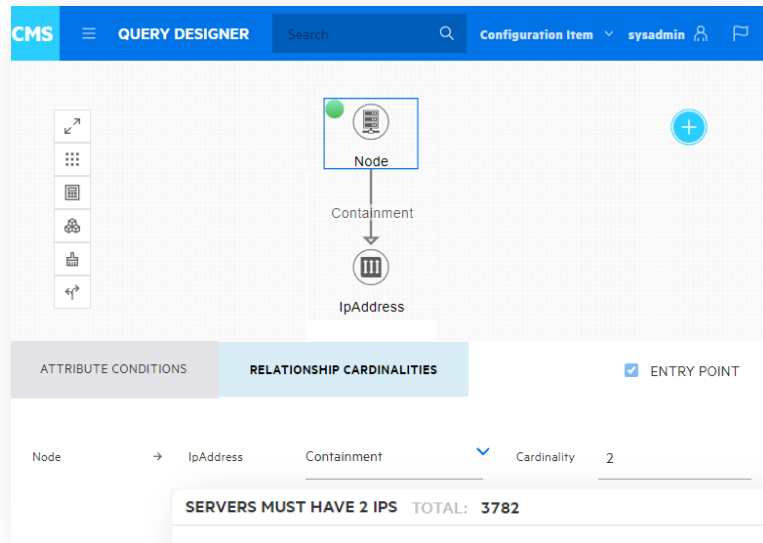
Ensure you have workable DRP

Red Hat should be 6.4 version or above

Control the Quality of your IT Services

Confirm your data is protected

AWS S3 is replicated



Reconciliation Analyzer

CI timeline from creation to deletion/merge

The screenshot displays the 'Reconciliation Analyzer' interface for a specific CI instance, 'myd-vm19663'. The interface features a blue header with the 'CMS' logo, a navigation menu, the instance name, a search icon, and user information ('sysadmin'). The main content area is titled 'myd-vm19663 Timeline' and shows a vertical timeline with three circular refresh icons. Three 'Modified' event cards are visible, each with a yellow header and a timestamp of '4 apr. 2018 15:41'. The first card shows the 'Name' changing from 'myd-vm19663' to 'cz24370bde'. The second card shows a 'Modified' event with a timestamp of '4 apr. 2018 17:18' and lists various system attributes like SnmpSysName, BiosAssetT..., PrimaryDnsName, Name, SerialNumber, and BiosUuid, all of which are shown as being updated to '<empty>'. The third card shows another 'Modified' event with a timestamp of '4 apr. 2018 15:41' and lists attributes such as SnmpSysName, DiscoveredModel, DiscoveredOsName, PrimaryDnsName, SerialNumber, Type, and BiosUuid, with values like 'app93m', 'VMware Virtual Platform', 'Windows 2003', 'app93m.domstolene.dk', 'CZ24370BDE', 'nt', and '42393CF4-331A-6863-DFE0-CA273553D2ED'.

myd-vm19663 Timeline

Modified 4 apr. 2018 15:41

Name: myd-vm19663 → cz24370bde

Modified 4 apr. 2018 17:18

SnmpSysName: app93m → <empty>
BiosAssetT...: 42393CF4-331A-6863-DFE0-CA273553D... → <empt...
PrimaryDnsName: app93m.domstolene.dk → <empty>
Name: cz24370bde → <empty>
SerialNumber: CZ24370BDE → <empty>
BiosUuid: 42393CF4-331A-6863-DFE0-CA273553D2ED → <empty>

Modified 4 apr. 2018 15:41

SnmpSysName: <empty> → app93m
DiscoveredModel: VMware Virtual Platform → <empty>
DiscoveredOsName: Windows 2003 → <empty>
PrimaryDnsName: <empty> → app93m.domstolene.dk
SerialNumber: <empty> → CZ24370BDE
Type: node → nt
BiosUuid: <empty> → 42393CF4-331A-6863-DFE0-CA273553D2ED

Universal Discovery Licensing: New Units Model



	10 Units License Packs provide:
Advanced Discovery Dependency + service Automated Service Modeling Oracle LMS	10 Servers OSI
Basic Discovery: Inventory + Software Smart Software Analytics	50 Servers OSI
	100 workstations containers, printers or mobile devices

Getting Engaged

Brochures, data sheets



IT Service Management Automation

Building better business

Get Started >



eBooks



Reaching New Heights With ITSM

IT Best Practice: Top 100 Best ITSM Practices 2016

Get Started >



Videos



Whitepapers

The Big Data Service Desk
Three Ways Big Data Can Transform Your Service Desk



www.microfocus.com/cmdb

Analyst reports

Vendor Selection Matrix – IT And Enterprise Service Management SaaS And Software: The Top 20 Vendors Scope: Global 2015 Excerpt for HP

Dr. Thomas Mendel Ph.D.
Managing Director
September 2015

© 2015, Research in Action. All Rights Reserved. Reproduction Prohibited

Infographics

5 Key Capabilities for a Smart Service Desk Solution

Building a strong foundation for IT service management

The IT landscape is constantly changing. So how can you maintain control?

The challenge: 1. Fragmented data 2. Siloed information 3. Inconsistent processes

The solution: 1. Unified data 2. Integrated information 3. Streamlined processes

By using these capabilities, you can build a strong foundation for IT service management across CMDB, IM, and ITSM.

CMS community

IT Service Management

Join the community today!

Micro Focus ITSM Community

Customer stories

Customer stories

Yillibelik Group

Desjardins Group

U.S. Bank



Thank You